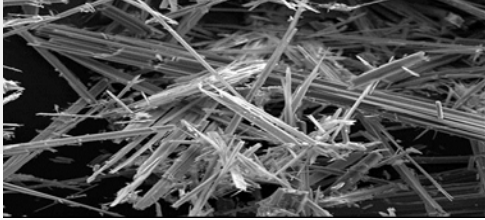


Renovating?

Check for asbestos before you start



ASBESTOS

Ren.o.vate: altering a facility or part of a facility in any way (except demolition).

Failure to comply with asbestos requirements may result in penalties.

Before you start most renovation (or demolition) projects, you MUST meet these asbestos requirements:



Conduct an Asbestos Survey

Asbestos has been widely used in many construction materials from insulation to vinyl flooring, to spray-on "popcorn" ceilings. Left undisturbed and in good condition, asbestos can perform as intended.

For almost all structures, an AHERA*-certified building inspector must perform the survey. The only exception is if this is a single-family, owner-occupied home, where owners may conduct their own survey for possible asbestos-containing materials (ACM). The ACM must either be removed prior to renovation or be left undisturbed. The results of the survey must either be posted at the work site or communicated in writing to anyone who may come into contact with the material.

Problems arise when asbestos deteriorates, falls apart or is disturbed during demolition and renovation. This can cause asbestos to break down (become "friable") into tiny fibers that become airborne. These fibers are easily inhaled and settle deep into the lungs where they cause lung cancer, asbestosis, or mesothelioma (a related terminal cancer) several years later.

File a Notification

Anyone who works or has the potential of working with products containing asbestos must fully comply with all regulatory requirements.

If any friable (disintegrates when crushed by hand) ACM is going to be removed from the structure, you must file a notification and pay a fee to the Puget Sound Clean Air Agency at www.pscleanair.org/asbestos.

Properly Remove Asbestos

Asbestos removal must be performed by a certified asbestos contractor. The only exception is if this is a single-family, owner-occupied home. Homeowner instructions are available from the Puget Sound clean Air Agency for removal of popcorn ceilings, sheet vinyl flooring and cement-asbestos board siding.

For More Information

Contact the Puget Sound Clean Air Agency at www.pscleanair.org/asbestos or call 206-689-4058.

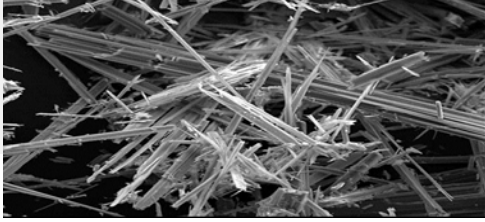
Note to contractors: check with Labor and Industry for additional requirements www.lni.wa.gov

*AHERA = Asbestos Hazardous Emergency Response Act.



1904 Third Avenue, Suite 105 | Seattle, WA 98101-3317
Phone 206-343-8800 | Toll Free 800-552-3565 | Fax 206-343-7522

Demolishing? Check for asbestos before you start



ASBESTOS

De.mol-ish: wrecking, razing, leveling, dismantling or burning of a structure, making it permanently uninhabitable

Failure to comply with asbestos requirements may result in penalties.

Before you can legally start any demolition (or most renovation) projects, you MUST meet these asbestos requirements:



Asbestos has been widely used in many construction materials from insulation to vinyl flooring, to spray-on "popcorn" ceilings. Left undisturbed and in good condition, asbestos can perform as intended.

Problems arise when asbestos deteriorates, falls apart or is disturbed during demolition and renovation. This can cause asbestos to break down (become "friable") into tiny fibers that become airborne. These fibers are easily inhaled and settle deep into the lungs where they cause lung cancer, asbestosis, or mesothelioma (a related terminal cancer) several years later.

Anyone who works or has the potential of working with products containing asbestos must fully comply with all regulatory requirements.

Conduct an Asbestos Survey

This survey must be conducted by an AHERA*-certified building inspector. You can search for them on the web or in phone books under "Asbestos Consulting and Testing". The results of the survey must either be posted at the work site or communicated in writing to anyone who may come into contact with the material.

File a Notification

You must file a completed notification and pay a fee to the Puget Sound Clean Air Agency at www.pscleanair.org/asbestos before you begin demolition.

Properly Remove Asbestos

All asbestos-containing materials must be removed from the structure by an asbestos contractor prior to demolition.

For More Information

Contact the Puget Sound Clean Air Agency at www.pscleanair.org/asbestos or call 206-689-4058.

Note to contractors: check with Labor and Industry for additional requirements at www.lni.wa.gov

*AHERA = Asbestos Hazardous Emergency Response Act.



1904 Third Avenue, Suite 105 | Seattle, WA 98101-3317
Phone 206-343-8800 | Toll Free 800-552-3565 | Fax 206-343-7522